

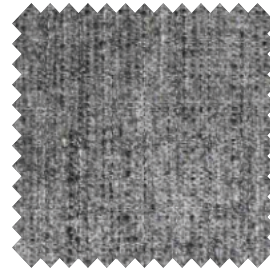
SCOTT



natural 01



steel 149



grey 65



brown 15



slate 87



lava 165



espresso 123



blue 45



cabernet 205



mustard 06



army 14



copper 126

Scott - Article passport

Article Scott is a yarn dyed quality chenille yarn with a trendy all-over pattern with a marble effect.

Available from stock in a wider range of contemporary and commercial colours.

Product characteristics

| | |
|----------------------|---|
| Product group | chenille jacquard |
| Applications | sofa's, beds, chairs with fitted and loose fitting upholstery |
| Composition faceside | 74% PES 26% PAC |
| Statistic Code | 58013600 |
| Dyeing method | yarn dyed |
| Available colours | 12 |

Durability specifications

| Test | Test Specification | Executed by laboratory: | Unit | Test result | | Norm RALGZ 430/4:2016-01 | | Norm DIN EN 14 465:2006-09 |
|-------------------------------------|--|--|--------|-------------|--------|--------------------------|----------------------|----------------------------|
| | | | | DRY | WET | DGM | DGM+ | |
| Abrasion Resistance - yarn breakage | DIN EN ISO 12947-1:2007-04, DIN EN ISO 12947-2:2007-05 | CTL | cycles | 55.000 | | min. 8.000 | min. 16.000 | B |
| Pilling | DIN EN ISO 12945-2:2000-11, 2000 cycles | CTL | grade | 4 | | min. 3-4 | min. 4 | B |
| Colour fastness to light | DIN EN ISO 105-B02:2014-11, Process 3, exposure level | | | | | | | |
| | light colours | CTL | grade | 5 | | min. 4 | min. 5 | A |
| | middle colours | CTL | grade | 5 | | min. 4 | min. 5 | A |
| Colour fastness to rubbing | DIN EN ISO 105-X12:2016-11 | | | | | | | |
| | light colours | CTL | grade | 4-5 | 4-5 | dry: 4, wet: 3 | dry: min 4, wet: 3-4 | A/A |
| | middle colours | CTL | grade | 4-5 | 4-5 | dry: 4, wet: 3 | dry: min 4, wet: 3-4 | A/A |
| Colour fastness to rubbing | dark colours | CTL | grade | 4-5 | 4 | dry: 4, wet: 3 | dry: min 4, wet: 3-4 | A/A |
| | Ignitability (cigarette test) | BS 5852 part 1 (1979) from The Furniture and Furnishings (Fire) (Safety) Regulations: 1988 No. 1324, Schedule 4 part 1, Ignition source: cigarette | CTL | | passed | | | |



Processing specifications

| | |
|---|-------|
| Minimum workable width in centimeters | ± 138 |
| Roll length in meters | ± 40 |
| Material weight in grams per linear meter | ± 567 |

| Test | Test Specification | Executed by laboratory: | Unit | Test result | | Norm RALGZ 430/4:2016-01 | | Norm DIN EN 14 465:2006-09 |
|-----------------------------|--|-------------------------|--------|-------------|-------|--------------------------|----------|----------------------------|
| | | | | WARP | WEFT | DGM | DGM+ | |
| Tensile strength | DIN EN ISO 13934-1:2013-08 | CTL | Newton | 1.648 | 1.524 | min. 350 | min. 400 | A/A |
| Tear growth resistance | DIN EN ISO 13937-3:2000-06 | CTL | Newton | 99,6 | 240,4 | min. 25 | min. 30 | A/A |
| Resistance to seam slippage | DIN EN ISO 13936-2:2004-07, Load 180 N | CTL | mm | 2,0 | 2,0 | max. 5 | max. 4 | A/A |
| Chemical substances | REACH | Centexbel | | passed | | | | |

Cleaning specifications

| Test | Test Specification | Executed by laboratory: | Unit | Test result | | Norm RALGZ 430/4:2016-01 | | Norm DIN EN 14 465:2006-09 |
|--|---|-------------------------|------|-------------|-------|--------------------------|------|----------------------------|
| | | | | WARP | WEFT | DGM | DGM+ | |
| Dimensional change for washing 30 degrees Celsius / air drying | DIN EN ISO 5077:2008-04, DIN EN ISO 6330:2013-02, DIN EN ISO 3759:2011-08 | CTL | % | + 0,0 | + 0,0 | n/a | n/a | A/A |

We recommend to immediately place the cover back to the piece of furniture slightly damp after washing.

Textaafoam
creativity in fabrics

Textaafoam b.v.
La Défense 11 | 5026 SC Tilburg
P.O. Box 12 | 5050 AA Goirle The Netherlands

T +31(0)13 534 5934
F +31(0)13 534 7586
E info@textaafoam.nl
www.textaafoam.nl