

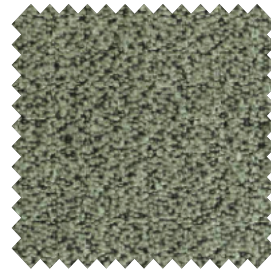
# ALPINE



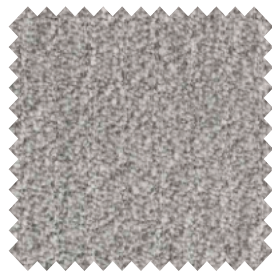
ivory 101



natural 01



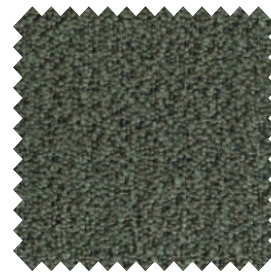
thyme 206



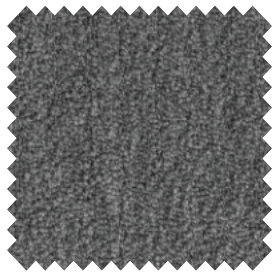
steel 149



beige 05



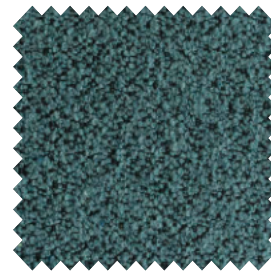
forest 162



grey 65



brown 15



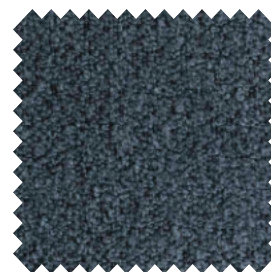
denim 153



onyx 169



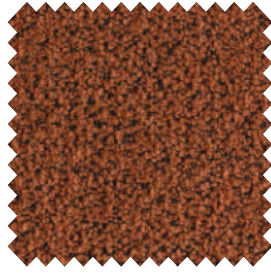
darkbrown 18



indigo 90



bronze 116



hazel 96

## Alpine - Article passport

Nice and authentic bouclé woven quality with a soft and full grip and rich appearance.

Available from stock in a wider range of contemporary and commercial colours.

### Product characteristics

Product group	polyester polyacrylic flatweave
Applications	sofa's, beds, chairs with fitted and loose fitting upholstery
Composition faceside	96% PES 4% PAC
Statistic Code	54079300
Dyeing method	yarn dyed
Available colours	14



### Durability specifications

Test	Test Specification	Executed by laboratory:	Unit	Testresult		Norm RALGZ 430/4:2016-01		Norm DIN EN 14 465:2006-09
				DRY	WET	DGM	DGM+	
Abrasion Resistance - yarn breakage	DIN EN ISO 12947-1:2007-04, DIN EN ISO 12947-2:2017-03	CTL	cycles	75.000		min. 8.000	min. 16.000	B
Pilling	DIN EN ISO 12945-2:2000-11, 2000 cycles	CTL	grade	4		min. 3-4	min. 4	B
Colour fastness to light	DIN EN ISO 105-B02:2014-11, Process 3, exposure level 5							
	light colours	CTL	grade	5		min. 4	min. 5	B
	middle colours	CTL	grade	5		min. 4	min. 5	B
Colour fastness to rubbing	DIN EN ISO 105-X12:2016-11							
	light colours	CTL	grade	5	5	dry: 4, wet: 3	dry: min 4, wet: 3-4	A/A
	middle colours	CTL	grade	5	5	dry: 4, wet: 3	dry: min 4, wet: 3-4	A/A
Colour fastness to rubbing	dark colours	CTL	grade	5	5	dry: 4, wet: 3	dry: min 4, wet: 3-4	A/A
	dark colours	CTL	grade	5	5	dry: 4, wet: 3	dry: min 4, wet: 3-4	A/A
Ignitability (cigarette test)	BS 5852 part 1 (1979) from The Furniture and Furnishings (Fire) (Safety) Regulations: 1988 No. 1324, Schedule 4 part 1, Ignition source 0: cigarette	CTL		passed				

### Processing specifications

Minimum workable width in centimeters	± 143							
Roll length in meters	± 35							
Material weight in grams per linear meter	± 680							
Test	Test Specification	Executed by laboratory:	Unit	Testresult		Norm RALGZ 430/4:2016-01		Norm DIN EN 14 465:2006-09
				WARP	WEFT	DGM	DGM+	
Tensile strength	DIN EN ISO 13934-1:2013-08	CTL	Newton	1514	717	min. 350	min. 400	A/A
Tear growth resistance	DIN EN ISO 13937-3:2000-06	CTL	Newton	1369	1763	min. 25	min. 30	A/A
Resistance to seam slippage	DIN EN ISO 13936-2:2004-07, Load 180 N	CTL	mm	2,0	2,0	max. 5	max. 4	A/A
Chemical substances	REACH	Centexbel		passed				

### Cleaning specifications

Test	Test Specification	Executed by laboratory:	Unit	Testresult		Norm RALGZ 430/4:2016-01		Norm DIN EN 14 465:2006-09
				WARP	WEFT	DGM	DGM+	
Dimensional change for washing 30 degrees Celsius / air drying	DIN EN ISO 5077:2008-04, DIN EN ISO 6330:2013-02, DIN EN ISO 3759:2011-08	CTL	%	- 0,4	- 2,0	n/a	n/a	A/A
		We recommend to immediately place the cover back to the piece of furniture slightly damp after washing						

**Textaafoam**  
creativity in fabrics

Textaafoam b.v.  
La Défense 11 | 5026 SC Tilburg  
P.O. Box 12 | 5050 AA Goirle The  
Netherlands

T +31(0)13 534 5934  
F +31(0)13 534 7586  
E info@textaafoam.nl  
www.textaafoam.nl