



COUNTER (Pico Bello Coll.)

COUNTER ANTHRACITE 67



COUNTER BLUE 45



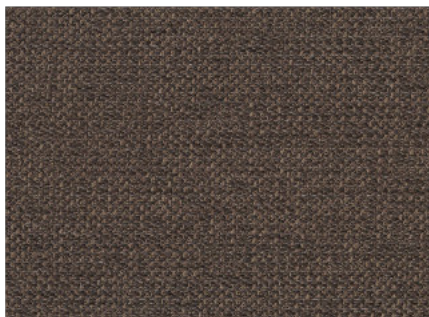
COUNTER CARAMEL 16



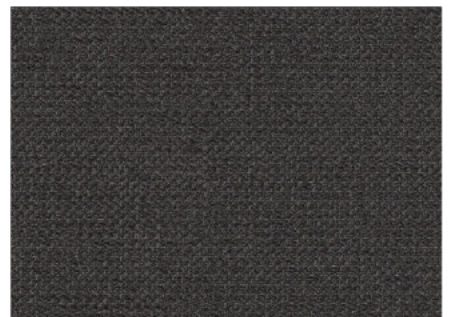
COUNTER ASHGREY 40



COUNTER BROWN 15



COUNTER CHARCOAL 79



COUNTER ECRU 102



COUNTER LIGHTGREY 60



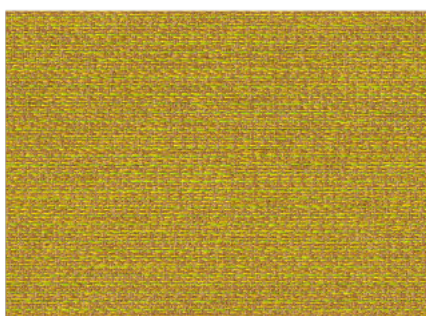
COUNTER NATURAL 01



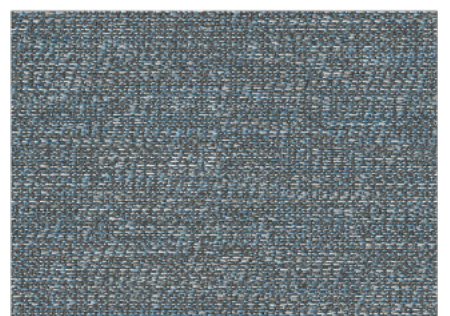
COUNTER ESPRESSO 123



COUNTER MUSTARD 06



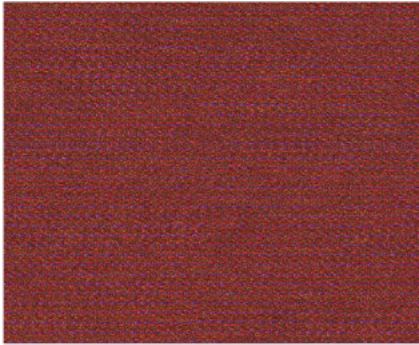
COUNTER OCEANBLUE 147



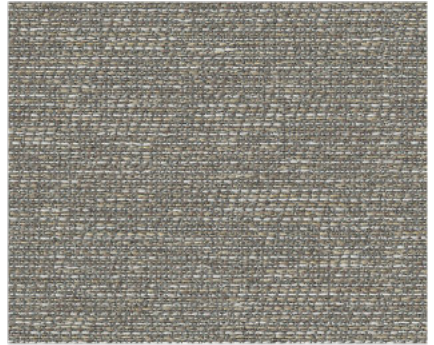
COUNTER ONYX 169



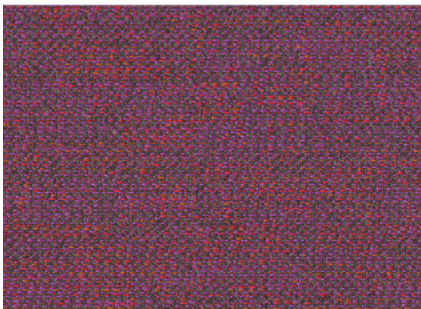
COUNTER RED 35



COUNTER SHITAKE 124



COUNTER PURPLE 78



COUNTER SAND 03

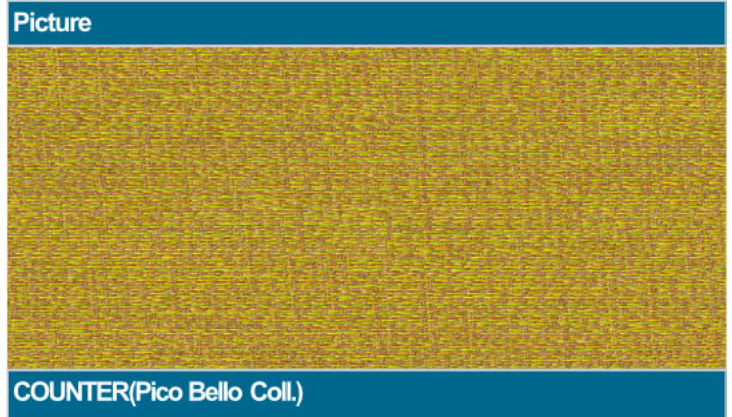


COUNTER TAUPE 12



COUNTER

General Product Specification	
Product group	Flatweave
Composition faceside	51%PES 34%PP 15%RCO
Composition backing	n/a
Coating	SBR
Material Weight	448 g/lm
Tariff No.	54077300
Minimum usable width	138 cm
Roll length	50 mtr
Number of colors	18



Product Specific Properties:
- easy clean article
- strong fabric
- multi coloured aspect
- soft, strong and full grip
- matches the articles Cargo, Clock and Caddy
- www.picobello-fabrics.com

Information about the Productgroup:
Flat-woven fabrics are woven fabrics formed by 2 thread groups crossing at right angles to each other. The closer the threads are to each other, the higher the density and the heavier the fabric will be. Furthermore, the thickness of the threads is also of importance as regards the construction and the weight of the fabric.

Test specifications:	
Abrasion resistance <i>ENISO 12947 1 & 2</i>	25000 cycles till yarnbreakage Martindale
Pilling resistance <i>ENISO 12945-2</i>	class 4-5 2000 Rubs
Lightfastness <i>ENISO 105 B02</i>	Light colors 5 Middle colors 5 Dark colors 5
Tensile (breaking str.) <i>ENISO 13934-1</i>	Warp 1737 Newton Weft 981 Newton
Tear strength <i>ENISO 13937-3</i>	Warp 259,7 Newton Weft 214,7 Newton
Seam slippage <i>ENISO 13936 2</i>	Warp 5 mm Weft 6 mm
Fastness to rubbing <i>ENISO 105 X12</i>	class 4-5 Wet class 4-5 Dry

Test specifications:	
Yarn dyed	<input checked="" type="checkbox"/>
Piece dyed	<input type="checkbox"/>
Damp- prevented	<input type="checkbox"/>
Dirt-prevented	<input type="checkbox"/>
Flame resistance	<input type="checkbox"/>
Cigarette test:	BS 5852 (1979) <input checked="" type="checkbox"/>
Match test:	<input type="checkbox"/>

Washing Instructions				
