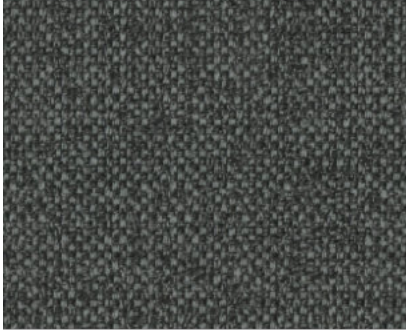




SOLUTION (Pico Bello Coll.)

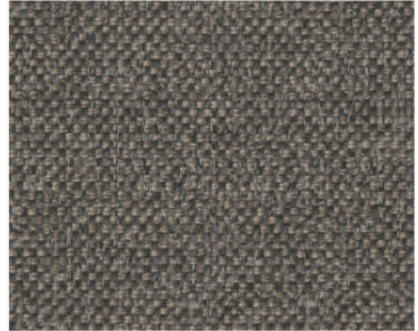
SOLUTION ANTHRACITE 67



SOLUTION BEIGE 05



SOLUTION BROWN 15



SOLUTION ASHGREY 40



SOLUTION BLOSSOM 166



SOLUTION CAMEL 09



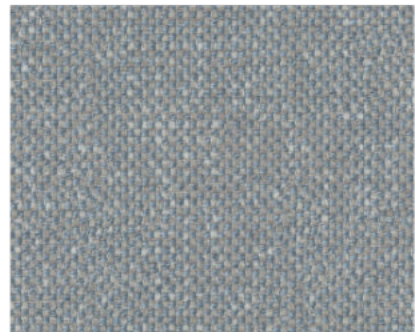
SOLUTION CELERY 80



SOLUTION DARKBROWN 18



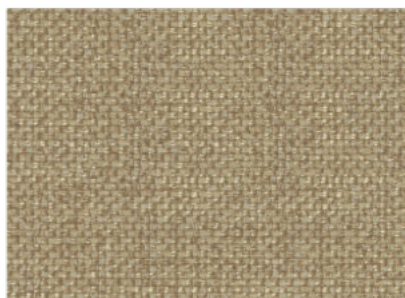
SOLUTION ICEBLUE 43



SOLUTION CHOCOLATE 17



SOLUTION DESERT 126

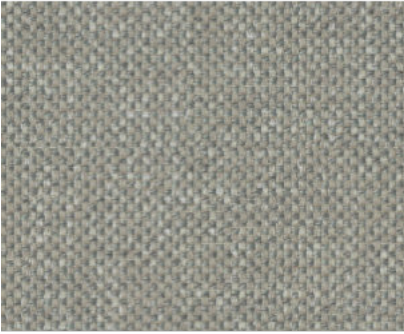


SOLUTION LIGHTBROWN 115

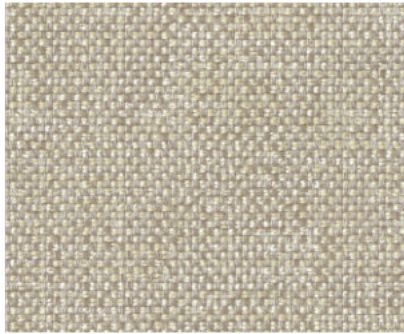


SOLUTION (Pico Bello Coll.)

SOLUTION LIGHTGREY 60



SOLUTION NATURAL 01



SOLUTION SAND 03



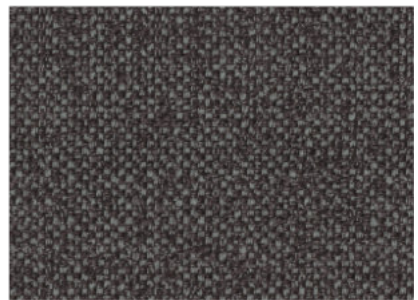
SOLUTION MOCCA 13



SOLUTION ONYX 169



SOLUTION STEEL 149



NORONEN

SOLUTION

General Product Specification

Product group	Flatweave
Composition faceside	46%PAC 44%PES 10%RCO
Composition backing	n/a
Bonding / Coating	n/a
Material Weight	690 g/lm
Tariff No.	55169300
Minimum usable width	138 cm
Roll length	50 mtr
Number of colors	19

Picture



SOLUTION (Pico Bello Coll.)

Product Specific Properties:

- easy clean article
- strong fabric
- multi coloured aspect
- soft, strong and full grip
- www.picobello-fabrics.com

Information about the Productgroup:

Flat-woven fabrics are woven fabrics formed by 2 thread groups crossing at right angles to each other. The closer the threads are to each other, the higher the density and the heavier the fabric will be. Furthermore, the thickness of the threads is also of importance as regards the construction and the weight of the fabric.

Test specifications:

Abrasion resistance <i>ENISO 12947 1 & 2</i>	40000 cycles till yarnbreakage Martindale
Pilling resistance <i>ENISO 12945-2</i>	class 4-5 2000 Rubs
Lightfastness <i>ENISO 105 B02</i>	Light colors 5 Middle colors 5 Dark colors 5
Tensile (breaking str.) <i>ENISO 13934-1</i>	Warp 2400 Newton Weft 1700 Newton
Tear strength <i>ENISO 13937-3</i>	Warp 230 Newton Weft 470 Newton
Seam slippage <i>ENISO 13936 2</i>	Warp 4 mm Weft 4 mm
Fastness to rubbing <i>ENISO 105 X12</i>	class 5 Wet class 5 Dry

Test specifications:

Yarn dyed	<input checked="" type="checkbox"/>
Piece dyed	<input type="checkbox"/>
Damp- prevented	<input type="checkbox"/>
Dirt-prevented	<input type="checkbox"/>
Flame resistance	<input type="checkbox"/>
Cigarette test:	BS 5852 (1979) <input checked="" type="checkbox"/>
Match test:	<input type="checkbox"/>

Washing Instructions

