

NORONEN

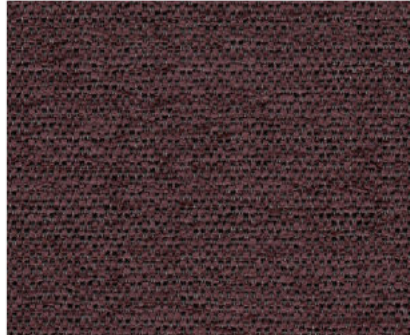


TRAY (Pico Bello Coll.)

TRAY ANTHRACITE 67



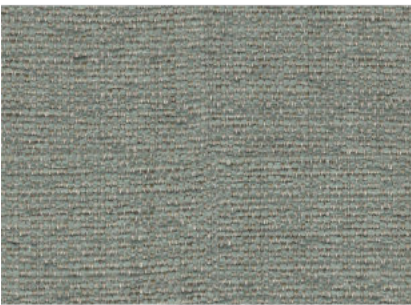
TRAY BLACKBERRY 177



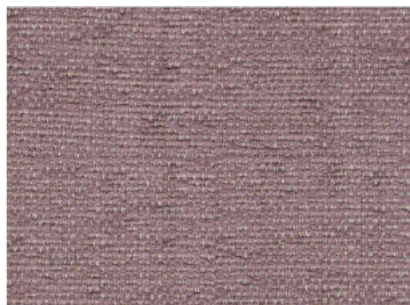
TRAY CARAMEL 16



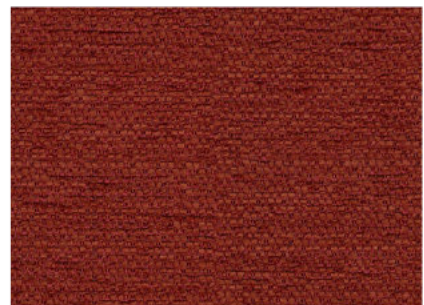
TRAY AZURE 144



TRAY BLOSSOM 166



TRAY CARMINE 36



TRAY CLAY 84



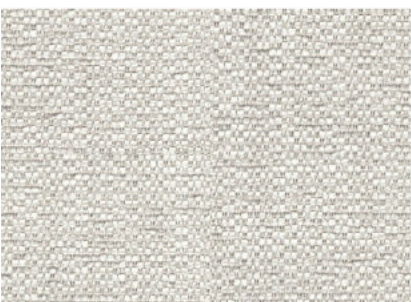
TRAY DARKBROWN 18



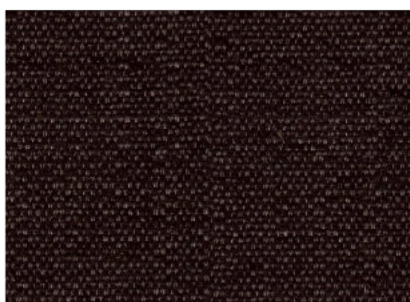
TRAY EUCALYPTUS 193



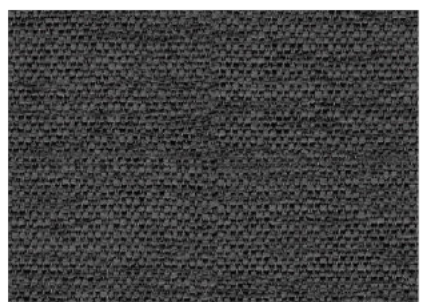
TRAY CREAM 02



TRAY ESPRESSO 123



TRAY GREY 65



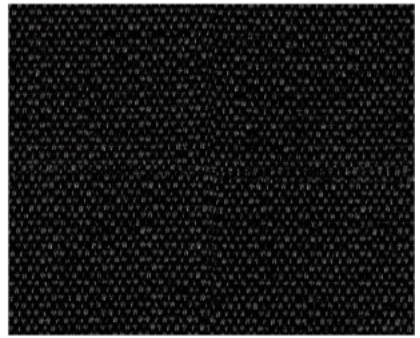
TRAY LIGHTGREY 60



TRAY MOCCA 13



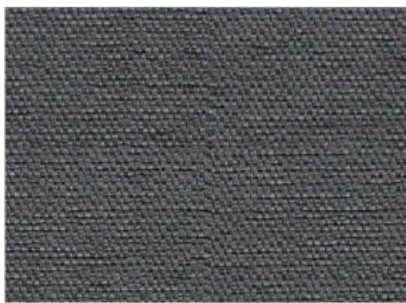
TRAY ONYX 169



TRAY LIVER 10



TRAY NIAGARA 158



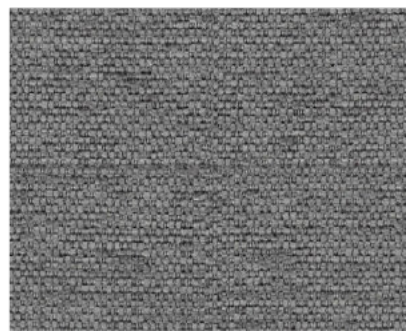
TRAY TAUPE 12



TRAY TURTLE 88

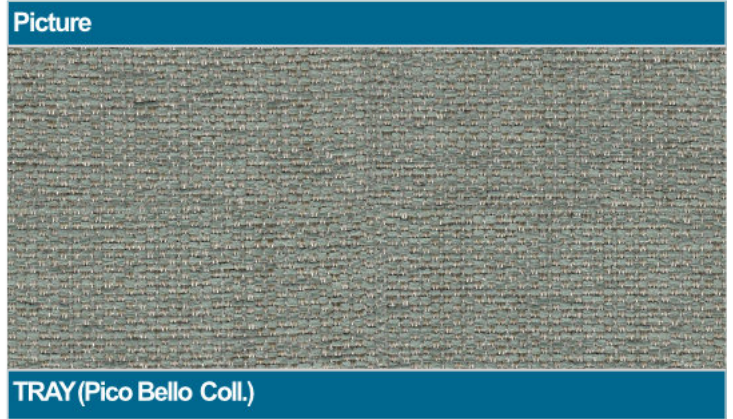


TRAY ZINC 167



TRAY

General Product Specification	
Product group	Flatweave
Composition faceside	91%PES 9%RCO
Composition backing	n/a
Coating	Transparent
Material Weight	493 g/lm
Tariff No.	58013600
Minimum usable width	138 cm
Roll length	50 mtr
Number of colors	20



Product Specific Properties:
- easy clean article
- www.picobello-fabrics.com
- strong fabric
- soft, strong and full grip
- suitable for both fitted and loose fitting upholstery
- because of chenille yarn, seat depression is possible
- combination of natural and synthetic yarns

Information about the Productgroup:
Flat-woven fabrics are woven fabrics formed by 2 thread groups crossing at right angles to each other. The closer the threads are to each other, the higher the density and the heavier the fabric will be. Furthermore, the thickness of the threads is also of importance as regards the construction and the weight of the fabric.

Test specifications:	
Abrasion resistance <i>ENISO 12947 1 & 2</i>	30000 cycles till yarnbreakage Martindale
Pilling resistance <i>ENISO 12945-2</i>	class 4 2000 Rubs
Lightfastness <i>ENISO 105 B02</i>	Light colors 5 Middle colors 5 Dark colors 5
Tensile (breaking str.) <i>ENISO 13934-1</i>	Warp 2383 Newton Weft 412 Newton
Tear strength <i>ENISO 13937-3</i>	Warp 127,7 Newton Weft 51,3 Newton
Seam slippage <i>ENISO 13936 2</i>	Warp 5 mm Weft 5 mm
Fastness to rubbing <i>ENISO 105 X12</i>	class 4-5 Wet class 4-5 Dry

Test specifications:	
Yarn dyed	✓
Piece dyed	
Damp- prevented	
Dirt-prevented	
Flame resistance	
Cigarette test:	BS 5852 (1979) ✓
Match test:	

Washing Instructions

