

NORONEN

Chain



OEKO-TEX®
CONFIDENCE IN TEXTILES



FABRAA®
fabrics with a conscience



beige 05



cinnamon 94



denim 153



ecru 102



eucalyptus 193



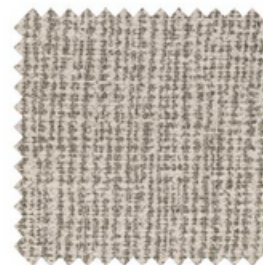
graphite 66



grey 65



hazel 96



ivory 101



jungle 207



liver 10



mustard 06

Please note: colours may vary according to your screen settings.



steel 149



wood 108

Please note: colours may vary according to your screen settings.

Chain - Article passport

A sustainable, luxurious, yarn dyed upholstery fabric, woven on a jacquard loom for an exclusive look & feel.

Available from stock in a wide range of contemporary and commercial colours.

Product characteristics

Productgroup	flatweave
Applications	sofa's, beds, chairs with fitted and loose fitting upholstery
Composition faceside	45%RPET 32%PAC 10%RCO 7%PES 6%WO
Composition backside	n/a
Coating	transparent
Statistic code	55169300
Dyeing method	yarn dyed
Available colours	14
Packaging	transparent plastic

Durability specifications

Test	Test specification	Executed by laboratory:	Unit	Testresult		Norm RAL GZ 430/4:2019-01		Norm DIN EN 14 465:2006-09
				Dry	Wet	DGM	DGM+	
Abrasion resistance - yarn breakage	DIN EN ISO 12947-1:2007-04, DIN EN ISO 12947-2:2017-03	CTL	cycles	35.000		min. 8.000	min. 16.000	B
Pilling	DIN EN ISO 12945-2:2000-11. 2000 cycles	CTL	grade	4-5		min. 3-4	min. 4	A
Colour fastness to light	DIN EN ISO 105-B02:2014-11. Process 3, exposure level 5	CTL	grade	light colours		min. 4	min.5	B
				middle colours		min. 4	min.5	B
				dark colours		min. 4	min.5	B
Colour fastness to rubbing	DIN EN ISO 105-X12:2016-11	CTL	grade	light colours		dry: 4, wet: 3	dry: > 4, wet: 3-4	A/A
				middle colours		dry: 4, wet: 3	dry: > 4, wet: 3-4	A/A
				dark colours		dry: 4, wet: 3	dry: > 4, wet: 3-4	A/A
Ignitability (cigarette test)	BS 5852 part 1 (1979) from The Furniture and Furnishing (Fire) (Safety) regulations: 1988 No. 1324. Schedule 4 part 1 Ignition source 0: cigarette	CTL		passed				

Processing specifications

Minimum workable width in centimeters	± 138
Roll length in meters	± 35
Material weight in grams per linear meter	± 613

Test	Test specification	Executed by laboratory:	Unit	Testresult		Norm RAL GZ 430/4:2019-01		Norm DIN EN 14 465:2006-09
				Warp	Weft	DGM	DGM+	
Tensile strength	DIN EN ISO 13934-1:2013-08	CTL	Newton	1.127	970	min. 350	min. 400	A/A
Tear growth resistance	DIN EN ISO 13937-3:2000-06	CTL	Newton	102,9	167,9	min. 25	min. 30	A/A
Resistance to seam slippage	DIN EN ISO 13936-2:2004-07. Load 180 N	CTL	mm	3,5	3,2	max. 5	max. 4	A/A
Delamination	DIN 53530:1981-02	CTL	Newton	n/a	n/a	n/a	n/a	n/a
Chemical substances	REACH	Centexbel		passed				
	Oeko-Tex, product class II	Centexbel		certified				

Cleaning specifications

Test	Test specification	Executed by laboratory:	Unit	Testresult		Norm RAL GZ 430/4:2019-01		Norm DIN EN 14 465:2006-09
				Warp	Weft	DGM	DGM+	
Dimensional change for washing 30 degrees celcius / air drying	DIN EN ISO 5077:2008-04, DIN EN ISO 6330:2013-02, DIN EN ISO 3759:2011-08	CTL	%	-1,6	-2,2	n/a	n/a	A/B



- We recommend to wash the cover inside out and immediately place the cover back to the piece of furniture, slightly damp, after washing.

Oeko-TEX®
certified by

